



RANS Engineering & Chemicals Pvt. Ltd.

Corporate office: A-7/205, Brijpuri, New Delhi-110094

Contact: 011-22170895, +91-9871393743,

Email: info@ransengineering.com, ransengineering@gmail.com

Website: www.ransengineering.com



Company Profile

- *Incorporated in year 2014, As a small proprietorship firm named as “CHALAH CONSTRUCTIONS” It was later that new company was incorporated under the Indian Companies Act with the name of RANS ENGINEERING & CHEMICALS PVT LTD, Active in designing construction chemicals & waterproofing systems since last 5 years.*
- *Introduced perfect waterproofing treatment with Perfect suited chemical for substract.*
- *Our Products range includes almost 110 products.*
- *Our manufacturing facilities are in Tronica City(DELHI) & Ghaziabad(U.P).*
- *We are having our product presence in 6 States.*
- *We believe in delivering quality with zero tolerance.*

Vision

- To become the leading construction Company in the global market while delivering superior quality of products and projects that consistently exceed International Standards and provide Exceptional Customer Satisfaction.
- To continually deliver excellent value & innovative construction solutions to meet our clients' requirements.
- Using modern principles and sophisticated technologies, **RANS ENGINEERING & CHEMICALS PVT LTD** envisions being the primary preference at all times both nationally and globally, for their renowned excellence, quality, performance and reliability in all types of constructions.

Mission

- To perform for our customers the highest level of quality construction products and services at fair and market competitive prices.
- To maintain the highest levels of professionalism, integrity, honesty and fairness in our relationships with our suppliers, subcontractors, professional associates and customers.
- To become the customers' most preferred choice by attaining excellence in quality and timely completed value added projects.
- To continually innovate, develop and adopt state-of-the-art technology in methods and materials to enhance productivity and cost effectiveness.
- To build a safety culture aimed at continually reducing the frequency severity rate towards achieving zero accidents.

Our Corporate Objectives

- To improve construction quality and productivity to levels comparable with those in developed countries
- To raise capabilities and professionalism of firms and personnel in the industry, and promote the export of construction services
- To ensure building safety, well-managed and maintained buildings, and administer a progressive regulatory framework
- To be the technical authority and government's advisor on structural and civil defence shelter engineering
- To build an organization that fosters teamwork and innovation and develops our staff to their maximum potential

Our Core Values

- **Fairness & Respect:** Our fellow employees, customers, suppliers and subcontractors shall be treated with fairness & respect. **Good Neighbor:** Our community shall find us to be a good neighbor. **Environment:** We shall protect the environment.
- **Do the right thing:** We are committed to doing the right thing at all times.
- **Teamwork:** We will work as a team with all project stakeholders.
- **Greatness:** We are committed to being a great company.
- **Accountability:** All employees will be held accountable for their assigned responsibilities.
- **Customers:** Our customers will receive a quality product, at a fair price.
- **Employees:** Our employees will be rewarded for their job skills, productivity, innovation, growth & the ability to be a team player. They will be expected to share their ideas, job skills and mentor new employees.
- **Safety:** We are all responsible for the safety of our employees, subcontractors and the public. Our equipment will be well-maintained in a safe condition.
- **Continual improvement:** We will encourage continual improvement and profit growth. We will recruit and retain the best people and provide them with training and education. We will develop professional leaders.
- **Relationships:** We will develop long-standing relationships with owners and partners. We will be an understanding and respected partner who adds value to all relationships.

Key Customers



Satisfaction rate of over 90%

>60% Repeat Customers

RANS products used in most projects

Our Product Range

1



*Liquid Applied
Waterproofing
Coatings*

2



*Pre-Fabricated
Membranes*

3



*Epoxy
Flooring &
Waterproofing*

4



*Bituminous
Compounds &
Primers*

5



*Sealants,
Grouts &
Powder
Products*

6



*Concrete
Admixtures
& Curing
Compounds*

7



*Pipe-Line
Anticorrosive
Tape*

8



*Road Repairs
&
Construction
Compounds*

9



*Other
Additional
Products*

1

Liquid Applied Waterproofing Coatings

A



RANSCRYL-LMW :

- Elongation $350\pm 50\%$
- Water-based UV resistant white elastomeric coating

B



RANSCRYL-LMB:

- Elongation $800\pm 150\%$
- Water-based bituminous coating with high solid contents

C



RANSTHANE-BLK:

- Elongation $> 800\pm 50\%$
- Solvent-based bituminous coating with high solid contents

D



RANSTHANE-PMR:

- Highly Chemically Resistant
- Single pack, moisture cure polyurethane primer with excellent penetrating properties.

E



RANSPROOF-LMB50:

- Elongation $> 350\pm 150\%$
- Water-based bituminous coating with high solid contents

F



RANSCRETE-AP:

- $28\pm 2\%$ or $46\pm 2\%$ solid contents
- Mixed with cement to form Abrasion-resistant, waterproof coating

1

Liquid Applied Waterproofing Coatings

G



RANSGUARD-2K :

- 35% solid contents. And Specific Gravity – 1.80(mixed RANSGUARD-2K)
- Acrylic modified two part waterproof coating to be mixed in supplied ratio A & B.

H



RANSKRYST-COAT:

- Resistant to hydrostatic pressure When applied on negative side :- ≥ 1.6 Mpa
- Nano Technology/Surface Applied Crystalline Based Coating.

I



RANSCRETE-SBR:

- Solid Content $30 \pm 2\%$ or $50 \pm 1.0\%$
- Latex/SBR (Styrene Butadiene Rubberized Based Polymer)

2 *Pre-Fabricated Membranes*



- Five to seven layered APP modified bituminous membranes with melting points >150° C and flexibility up to 300%
- Centre core reinforcements: Non woven polyester mat, Glass Fiber Tissue, 20 micron HMHDPE film, 90 micron HMHDPE Film.
- Surface finishes: HMHDPE (Plain), Mineral, Aluminium, Self-adhesive and Geotextile Finish.
- Self-adhesive membranes are SBS modified with high cold resistivity

■ PRODUCT	■ DIMENSION	■ DESCRIPTION
■ RANSAPP-SUPER	■ (1Mx10M)	■ 160gsm non-woven polyester mat reinforced Thickness: 2mm to 4mm
■ RANSAPP-SHINE	■ (1Mx10M)	■ 45gsm glass fiber reinforced Thickness: 2mm to 4mm
■ RANSAPP-TOP	■ (1Mx10M)	■ 100 micron HMHDPE reinforced Thickness: 2mm to 4mm
■ RANSAPP-POLY-FELT	■ (1Mx20M)	■ 20 Micron HMHDPE reinforced Thickness: 0.8 to 1.5mm
■ RANSAPP-FELT-HF/FG	■ (1Mx20M)	■ Hessian/Fiber Based Tarfelt Weight : 25-46Kg
■ RANSAPP-SELF	■ (1Mx15M)	■ SBS Modified Mem. with Reinforcement Thickness: 2mm to 4mm

3

Epoxy Flooring & Waterproofing



RANSPOXY-PMR:

- **RANSPOXY-PMR** is Flexile Opaque Coating, especially designed formulated with Reactive diluents and Fillers, two component Epoxy based system [Resin & Hardener] for high solids can be used over MS structure for primer. **Coverage:-** 50–60 Sq.ft / kg with DFT 100-125 micron.

RANSPOXY-SLSC23

- **RANSPOXY-SLSC23** is Epoxy based solvent free, pigmented, high solids Self Leveling Screeding Coating consumed for protective & decorative coating for concrete surface...

For 2 mm	2.4 kg/sq.mtr	21 kgs = 8.70 sq.mtr
For 3mm	3.6 kg/sq.mtr	21 kgs =5.80 sq.mtr



RANSPOXY-SL1 or RANSPOXY-SL23:

- **RANSPOXY-SL1 or RANSPOXY-SL23** is Epoxy based solvent free, pigmented, high solids Self Leveling Floor Coating consumed for protective & decorative coating for concrete surface.

2.0 mm Mix of one kit of	11.60 kgs gives	4.50 sq.mtrs.
3.0 mm Mix of one kit of	11.60 kgs gives	3.60 sq.mtrs.
KIT 11.60 Kgs [R + H + F = 4.0 + 1.6 + 6.0] Also Available in 1mm.		

3 Epoxy Flooring & Waterproofing



RANSPOXY-PMR250 :

- Highly need for pH Value works.
- Two part Waterproof Epoxy Primer



RANSPOXY-SLF:

- Repairing material for substract.
- Solvent Free Epoxy Putty/Gel



RANSPOXY-CR:

- Chemical resistant work related.
- A Novalac Epoxy Coating



RANSPOXY-IGS:

- Bridge the honeycombing, gaps in structure
- Two Part Injection Grouting System.



RANSPOXY-WWC:

- Elastomeric, Flexible Coating
- Two part food grade epoxy for water retaining bodies for drinking water purpose.



RANSPOXY-LV:

- Epoxy repair mortars for rehabilitation and Strengthening of corroded concrete structures.

3

Epoxy Flooring & Waterproofing

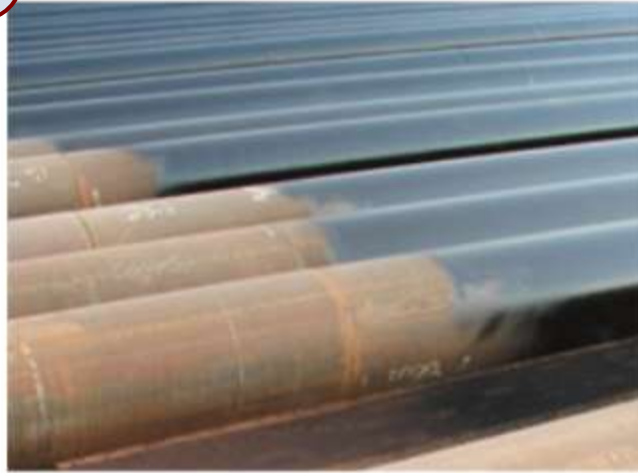
G



RANSPOXY-TGS :

- Exterior & Interior, Chemical resistant grouting system.
- Two Component Epoxy Based Tile Grout.

H



RANSPOXY-CTR:

- Color Resistant and Stain Resistant Epoxy.
- Two Part Coal Tar Based Epoxy System.

I



RANSPOXY-SC440:

- Dust Free Flooring System.
- Two Part Epoxy Sealer/Top Coat

4

Bituminous Compounds & Primers

A



RANSBITU-PMR :

- Low Viscous Bituminous Solution as per IS: 3384-1986 and BS 4147-1980.

B



RANSKOTE-PMR:

- Water Base Bitumen Primer with pH 4-6 Value with water content 45-50%

C



RANSANTICO-AL:

- Silver and Aluminium Paint as per IS 2339-1963.

D



RANSANTICO-BLP:

- Highly Chemically Resistant
- Ready mix Bituminous Anticorrosive Coating paint as per IS 9862/1981 & 158/1981.

E



RANSPLAST-CC:

- Elastomeric Sealing/Caulking Compound as per IS: 1580-1989.

F



RANSBOND-STICK:

- Cold applied adhesive for fixing roofing felt instead of Bitumen Grades 85/25, 80/100.

Bituminous Compounds & Primers

G



RANSBOND-FLEX:

- Adhesive for Rigid Insulation Flexible Tiles & Mats, other Industrial uses.
- Dry film thickness recommended per coat is 120 microns minimum.

G



RANSMASTIC-FLOOR:

- Bitumen Mastic as per IS: 3037-1986.
- Black color flooring material for LPG Godowns.

5 Sealants, Grouts and Powder Products

A



RANSPOLY-SEAL :

- A two pack THIOKOL (A registered trade mark of MORTON THIOKOL INC, USA) Polysulphide sealant.

D



RANSINJECT-1K:

- Hydrophobic-Polyurethane Injection Grout.
- Very low viscous liquid with Density 1.06-1.1.

B



RANSBITU-SEAL:

- A two grade hot applied bitumen sealing compound – Grade A & Grade B as per IS 1834/1984.

C



RANSPU-SEAL:

- Polyurethane Based Single & Dual Component Sealant – Grade-1K & 2K

E



RANSINJECT-2K:

- Two Part Polyurethane Resin Grout with low viscosity , flexible and Adhesion.

6 Concrete Admixtures & Curing Compounds



RANCONMIX-IWC :

- Integral Waterproofing Admixture- Lignosulphonate Based.



RANSKRYST-ADMIX:

- Integral Waterproofing Admixture- Crystalline Based.



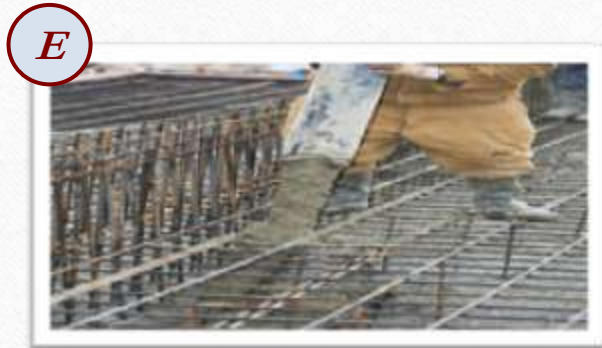
RANCONMIX-SP110:

- Anti-Corrosive, Set Reducing, Superplasticising Admixture.



RANCONMIX-SP210:

- Anticorrosive, Water Reducing, High Range Superplasticizer as per ASTM C494, IS:456.



RANCONMIX-SP310:

- High Performance Super Plasticizer Sulphonated Napthalene Polymer Based.



RANCONMIX-SP410:

- New Generation Slump Retaining Concrete Superplasticizer – PCE Based.

7

Anticorrosive Pipeline Coating



RANSPIPE-CBT (Anticorrosive Pipeline Wrapping Tape):

- Bituminous or Coal Tar based underground pipeline protection tapes conforming to IS 10221 or IS: 15337-2003 and AWWA: C203-2008.
- Thickness of 2mm, 3mm and 4mm
- Reinforcement of Fiber glass to provide strength while maintaining flexibility
- Available in widths from 4 inches to 40 inches, 10m length
- Ideal for pipe protection for decades

Road Repairs & Construction Compounds

RANSROADMIX-PHR:

- Cold patch asphalt mix that can be used by municipalities, contractors and business owners to **fill potholes and repair roads**
- Blend of bitumen, aggregates and high grade polymers to ensure immediate bonding with existing surface
- Available in 25kg bags



9

Liquid Applied Waterproofing Coatings

A



B



C



RANSGEOTEX-W :

- Compressed and Non-Compressed Non-Woven Polypropylene/Polyester Geotextile.
- 50gsm to 500gsm and special custom gsm available.

RANSJOINT-FILLER :

- Preformed Expansion Joint Filler Board.
- It is compressible sheet with 35% Bitumen content along with 70% Recovery.

RANSBUTYLE-TAPE :

- Sealant/Butyl Tape for Metal Structure with Specific gravity 14.6
- Elastomeric Butyl Rubber Sealant.

Product recommendations based on application area

TERRACE WATERPROOFING FOR NON TRAFFICABLE ROOFS

Option 1



- ✓ Minimum 3 mm thick APP membrane reinforced with polyester or glass fiber cloth (**RANSAPP-SUPER/SHINE**)
- ✓ Finishing with a coat of Aluminium paint for UV resistance (**RANSANTICO-AL**)

Option 2



- ✓ Minimum 3 mm thick APP membrane with mineral or gravel finish for UV resistance (**RANSAPP-MIN/GT**)

Option 3



- ✓ *Renew Aluminium paint coat every 3-4 years*
- ✓ Minimum 3 mm thick APP membrane reinforced with polyester and topped with Aluminium foil
- ✓ Aluminium provides heat and UV resistance

Option 4



- ✓ One-Two coats of **RANCRETE-AP** acrylic polymer with cement
- ✓ Reinforcement of glass fiber mesh
- ✓ Top 2-3 coats with **RANSCRYL-LMW** white elastomeric coating

Product recommendations based on application area

TERRACE WATERPROOFING FOR TRAFFICABLE ROOFS

Option 1



- ✓ Minimum 3 mm thick APP membrane reinforced with polyester or glass fiber cloth (**RANSAPP-SUPER/SHINE**)
- ✓ Protective layer of **RANSGEOTEX-W** min. 120 gsm bonded to APP membrane surface
- ✓ Protective wearing course of Approx. 50mm Screeding/plaster mixed with **RANSCONMIX-IWC** Integral waterproofing compound

Option 2



- ✓ One or Two coats of **RANSCRETE-AP** mixed with cement
- ✓ Reinforcement provided of **fiber glass mesh/Polyscrim Cloth.**
- ✓ 2 coats of **RANSCRYL-LMB/RANPROOF-LMB50** Acrylic bituminous coating/**RANSTHANE-BLK** Polyurethane bituminous coating.
- ✓ Sprinkle sand over top coat
- ✓ Protective wearing course of Approx. 50mm Screeding/Plaster mixed with **RANSCONMIX-IWC** Integral waterproofing compound

Product recommendations based on application area

WATERPROOFING OF WATER STORAGE TANKS AND SWIMMING POOLS

Option 1



- ✓ Injection grouting to be done on the concrete slabs using cement mixed with **RANSTURBO-GROUT** non-shrink admixture Seal construction joints, if any, using backer rods and **RANSPOLY-SEAL** Polysulphide sealant
- ✓ Three coats of **RANSCRETE-AP/RANSGUARD-2K** elastomeric cementitious coating
- ✓ 2-3 coats of **RANSCRYL-LMW/LMB/RANSPROOF-LMB50** elastomeric acrylic coating/**RANSTHANE-BLK** elastomeric PU coating.
- ✓ Sprinkle sand over top coat
- ✓ Cover with plaster mixed with **RANCONMIX-IWC** Integral waterproofing compound

Product recommendations based on application area

TERRACE WATERPROOFING FOR NEW BASEMENT (RAFT/VERTICAL WALLS)

Option 1



- ✓ Minimum 4 mm thick APP membrane reinforced with polyester or glass fiber cloth (**RANSAPP-SUPER/SHINE**)
- ✓ Protective layer of **RANSGEOTEX-W** min. 120 gsm bonded to APP membrane surface
- ✓ Protective wearing course of Approx. 50mm Screeding/plaster mixed with **RANSCONMIX-IWC** Integral waterproofing compound

Option 2



- ✓ One or Two coats of **RANSCRETE-AP** mixed with cement
- ✓ Reinforcement provided of **fiber glass mesh/Polyscrim Cloth**.
- ✓ 2 coats of **RANSCRYL-LMB/RANPROOF-LMB50** Acrylic bituminous coating/**RANSTHANE-BLK** Polyurethane bituminous coating.
- ✓ Sprinkle sand over top coat
- ✓ Protective wearing course of Approx. 50mm Screeding/Plaster mixed with **RANSCONMIX-IWC** Integral waterproofing compound

Product recommendations based on application area

PODIUM OR NON-TOWER AREA WATERPROOFING

Option 1



- ✓ Multi-layer system of **APP membranes of 1.5-2mm thickness** reinforced with HMHDPE film and stuck using **RANS Blown Bitumen 85/25**
- ✓ Specialized product for sticking bitumen membranes without needing to heat bitumen developed by RECPL Products – **RANSBOND-STICK**
- ✓ **Protective layer of geotextile** min. 120 gsm bonded to APP membrane surface
- ✓ Protective screed mixed with **RANSCONMIX-IWC** Integral waterproofing compound

Option 2

- ✓ Two coats of **RANSGUARD-2K** cementitious elastomeric coating
- ✓ 3 coats of **RANSCRYL-LMB/LMW** acrylic/bituminous coating/**RANSTHANE-BLK** polyurethane bituminous coating
- ✓ Sprinkle sand over top coat
- ✓ Protective screed mixed with **RANSCONMIX-IWC** Integral waterproofing compound



Product recommendations based on application area

WATERPROOFING FOR CEMENT SHEETS OR TIN SHEDS

Option 1



- ✓ 2-3 coats of **RANSCRYL--LMW** acrylic elastomeric coating
- ✓ 2 coats of **RANSCOOL-R** coating for thermal insulation cum waterproofing

Option 2



- ✓ Sticking 1.5mm APP membrane reinforced with HMHDPE film using **RANSBOND-STICK** as adhesive for bitumen membrane
- ✓ Apply coat of **RANSANTICO-AL** Aluminium paint for UV and heat resistance

Why Work With Us?



- *Over 5 Years of experience*



- *One Stop Destination (M+L)**



- *Best Pricing in Market*

Why Work With Us?



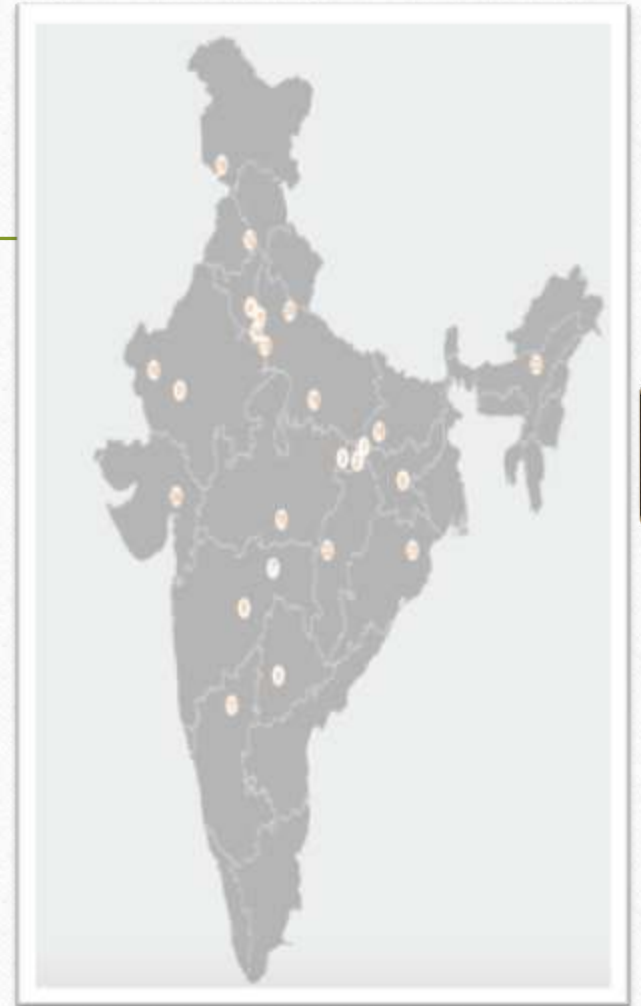
- *Constant Innovation*



- *Consistent Quality*



- *Open & Honest Relationships*



Thanking You.